



Create, Secure, and Publish APIs with IBM API Connect 10

Course Corrections Document

May 28, 2024

WD515 (Classroom)

ZD515 (Self-paced)

ERC 3.0

About this document

This document contains information about issues that were encountered during deliveries of this course. These issues will be addressed in subsequent updates of the material.

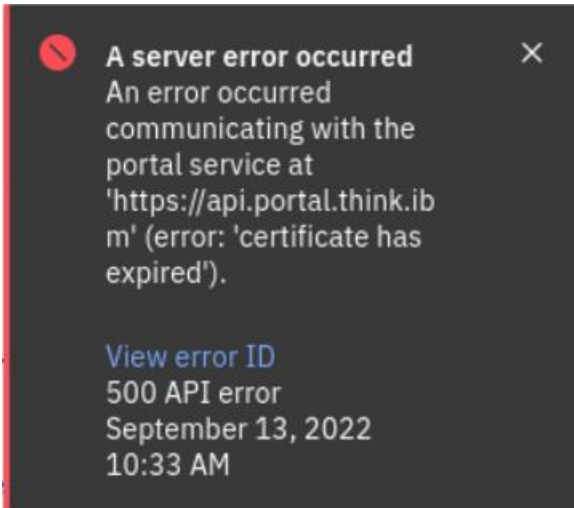
You should review this document before the start of class, and use this list as the first point of reference if issues arise.

Student Exercises Guide items

Exercise 2: Managing catalogs and consumer organizations, Section 1, Step 7d, page 2-10

Issue:

This version of API Connect has a bug that occasionally produces a server error when the user tries to create a portal for the catalog in API Manager.



Correction:

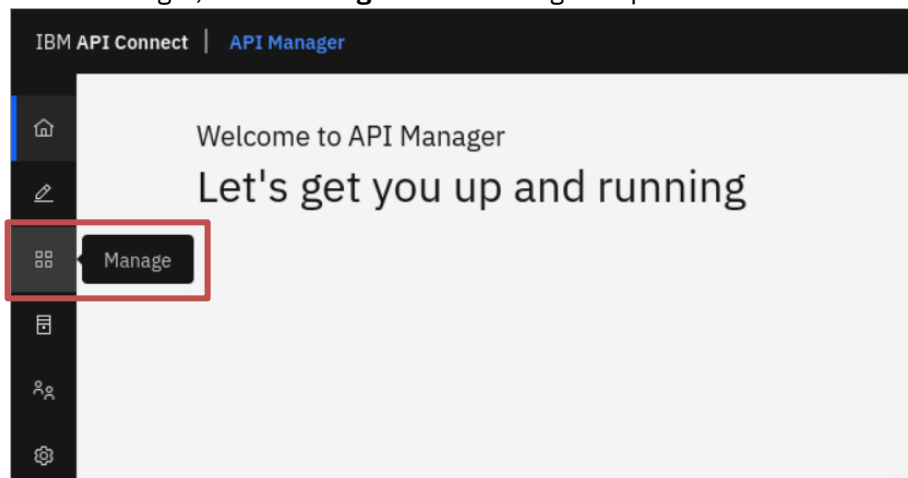
Step-by-step instructions to do after Exercise 2, Section 1, Step 7d results in the portal creation error.

1. Verify that the email server from the docker container is still running. In the terminal, enter the following command:

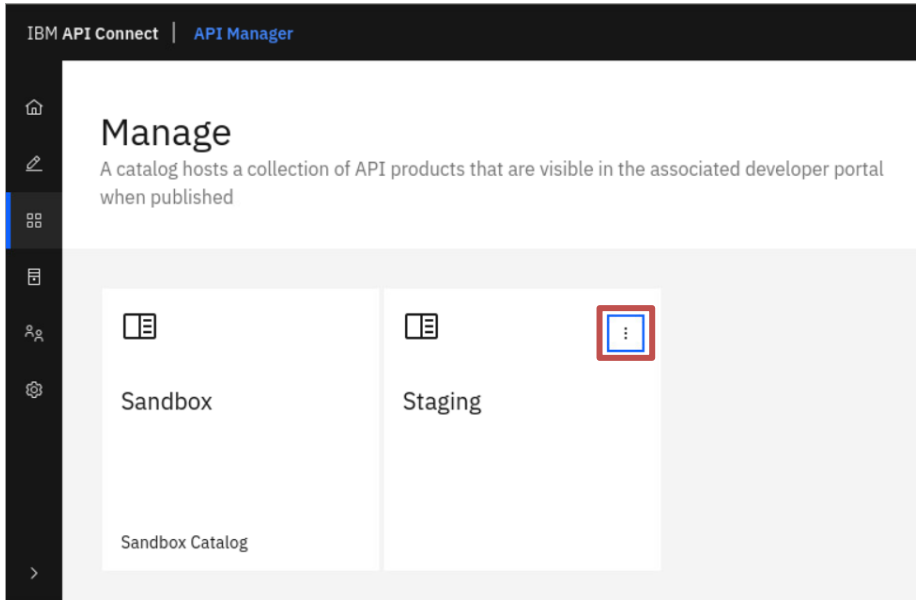
```
docker ps | grep 2525
```

```
[root@think ~]# docker ps | grep 2525
689bebe4058f   munkyboy/fakesmtp
                "/bin/sh -c 'java -j..." 11 hours ago    Up 11 hours    0.0.0.0:2525->25/tcp, :::2525->25/tcp
wizardly borg
```

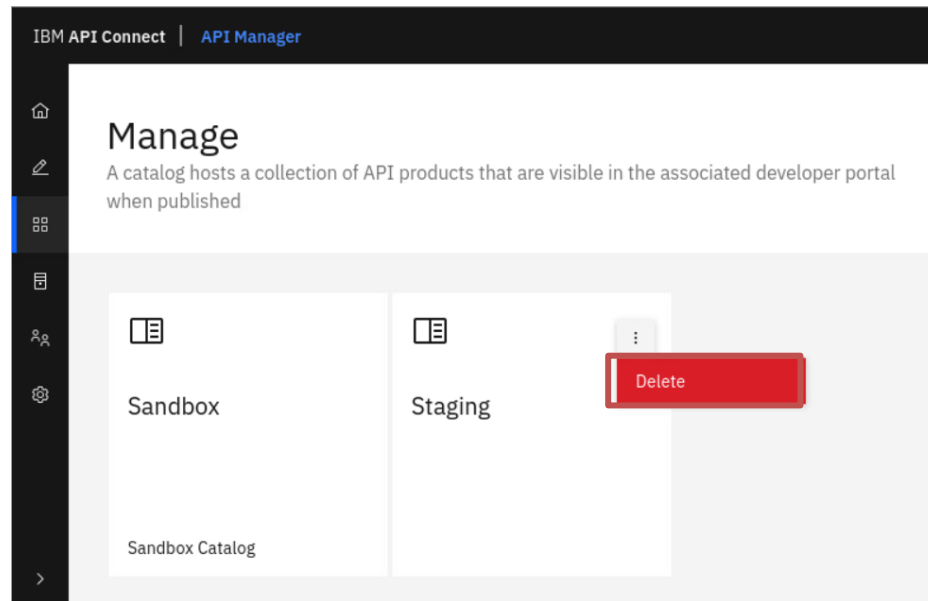
2. Delete the Staging catalog.
 - a. In API Manager, select **Manage** from the navigation pane.



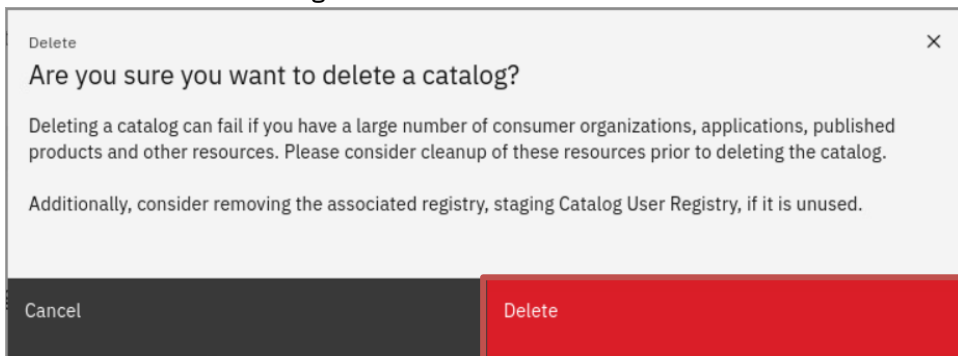
- b. Click the Staging catalog menu icon.



- c. Click Delete.



- d. Select Delete on the dialog.



It may take some time before the Staging catalog disappears.

3. Reboot the system.

- a. Open the terminal.

- b. Reboot. In the terminal, enter the following command:

```
reboot
```

```
[root@think ~]# reboot
```

Press Enter.

- c. Re-log in to the operating system.

4. Repeat Exercise 2.

- a. In the exercise book, start from Exercise 2, Section 1, Step 2.

Section 1. Create the Staging catalog

When the Think Provider Organization was created, a default Sandbox catalog was created. In this section, you create the Staging catalog and configure the cloud topology for the catalog. These steps have already been performed for the Sandbox catalog.

__ 1. Start the email server.

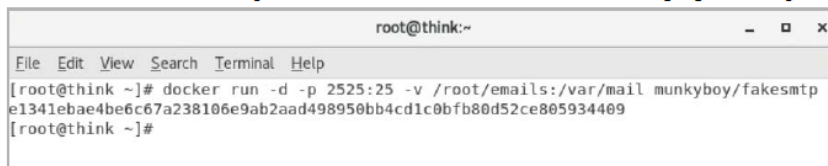
Before you add a catalog, you must first start the email server that sends the notification. The email server runs as a Java application on the course image. This course image uses a docker version of the fakeSMTP server application. Each email is written to a file in the `/root/emails` directory.

You use Mozilla Thunderbird to view the emails.

- __ a. Open a terminal from the application list on the Linux desktop.

- __ b. In the terminal, type:

```
docker run -d -p 2525:25 -v /root/emails:/var/mail munkyboy/fakesmtp
```



```
root@think:~  
File Edit View Search Terminal Help  
[root@think ~]# docker run -d -p 2525:25 -v /root/emails:/var/mail munkyboy/fakesmtp  
e1341ebae4befc67a238106e9ab2aad498950bb4cd1c0bfb80d52ce805934409  
[root@think ~]#
```

Minimize the window.

__ 2. Log in to API Manager as the owner of the provider organization

- __ a. Access the Firefox browser by clicking the icon on the desktop.

- __ b. Type `https://manager.think.ibm/` in the address area of the browser.

Alternatively, you can click the bookmark on the toolbar for API Manager.

A warning is presented in the browser.

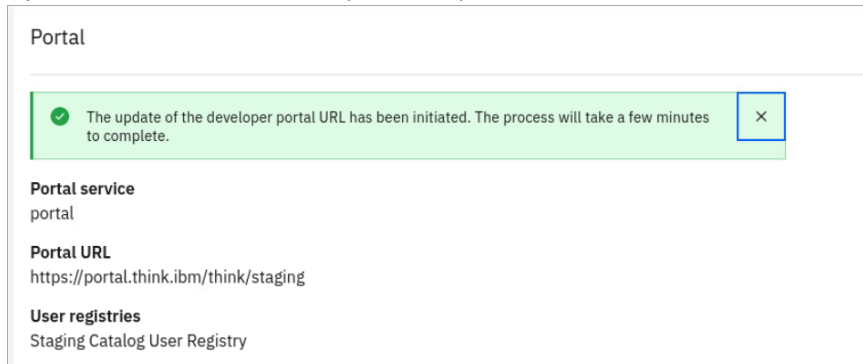
- __ c. Click **Advanced** in the Warning window.

- __ d. In the section that appears below, click **Accept the Risk and Continue**.

The API Manager website displays with a warning icon denoting the security exception.

Continue the exercise steps.

- b. By Exercise 2, Section 1, Step 7d, the portal creation succeeds.



Portal

The update of the developer portal URL has been initiated. The process will take a few minutes to complete.

Portal service
portal

Portal URL
`https://portal.think.ibm/think/staging`

User registries
Staging Catalog User Registry

- c. Continue the exercises. Start Exercise 2, Section 1, Step 8.

The Portal configuration is displayed along with a message stating the update has been initiated.

Portal


✓ The update of the developer portal URL has been initiated. The process will take a few minutes to complete.

Portal service
portal


Portal URL
https://portal.think.ibm/think/staging

User registries
Staging Catalog User Registry

__ 8. Log in to the Developer portal with the admin user.
Leave the API Manager user interface running. An email message is sent to the email server. Mozilla Thunderbird is used to view the sent email.

 **Note**
It might take some time for the message to be displayed in the email directory. The delay might be in the range of 10-15 minutes.

__ a. Double-click the **Home** icon in the list of applications on the Linux desktop.



Home

Student Notebook items

Page 2-37, in the Notes.

In the third bullet point the highlighted word should say **Consumer**. **Community** is incorrect.

Figure 2-31. Role of owners of the provider and consumer organizations

- After the owner of the provider organization has created a catalog and configured the portal settings, the owner saves the changes in API Manager. At this point, the Developer Portal for the catalog is created.
- The administrator of the Developer Portal activates the portal. The administrator does not belong to any consumer organization. The administrator is responsible for the customization of the Developer Portal.
- The owner of the provider organization adds the initial consumer organization and owner from the **Community** tab in API Manager.
- The owner of the Developer organization then signs on to the Developer Portal to activate the account.
- Depending on the permissions set for the Developer Portal in API Manager, the owner of the Developer organization might be able to add more users (application developers) and Developer organizations.

Course presentation items by unit

None reported.

End of document